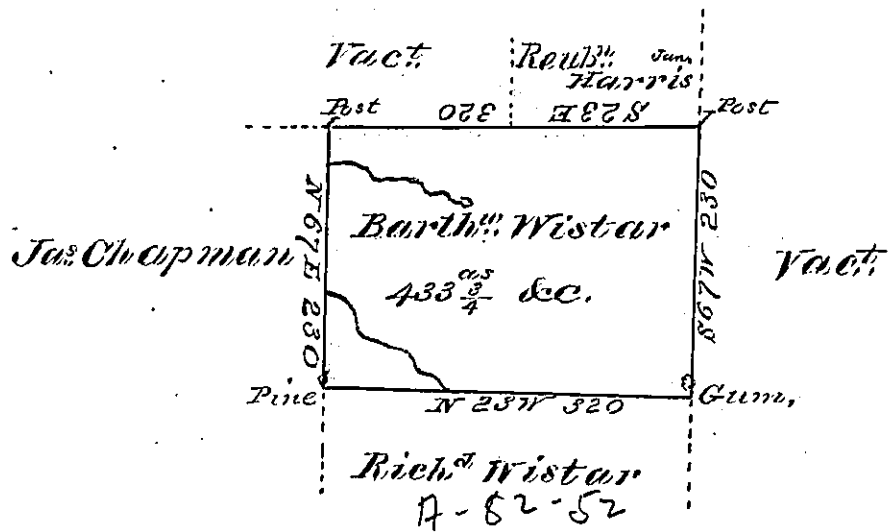


Butler
LUZERNE.



A Draft of a tract of land called Situate in
 the County of Luzerne Containing four Hundred
 and thirty three Acres $\frac{3}{4}$ & allowance. Surveyed for
 Bartholomew Wistar the 25th day of May 1793 by
 virtue of a warrant dated the 25th day of March 1793.

To
 Daniel Brodhead Esq^r }
 Sur^r? Genl. }

by
 Wm Gray — —

IN TESTIMONY that the above is a copy of the original remaining on file in the
 Department of Internal Affairs of Pennsylvania, made con-
 formably to an Act of Assembly approved the 16th day of
 February, 1833, I have hereunto set my Hand and caused
 the Seal of said Department to be affixed at Harrisburg, this

nineteenth day of July 1876

Wm Candler

Secretary of Internal Affairs